

The scope of antibiotic resistance genes in sewages of Rostov-on-Don and lower Don River

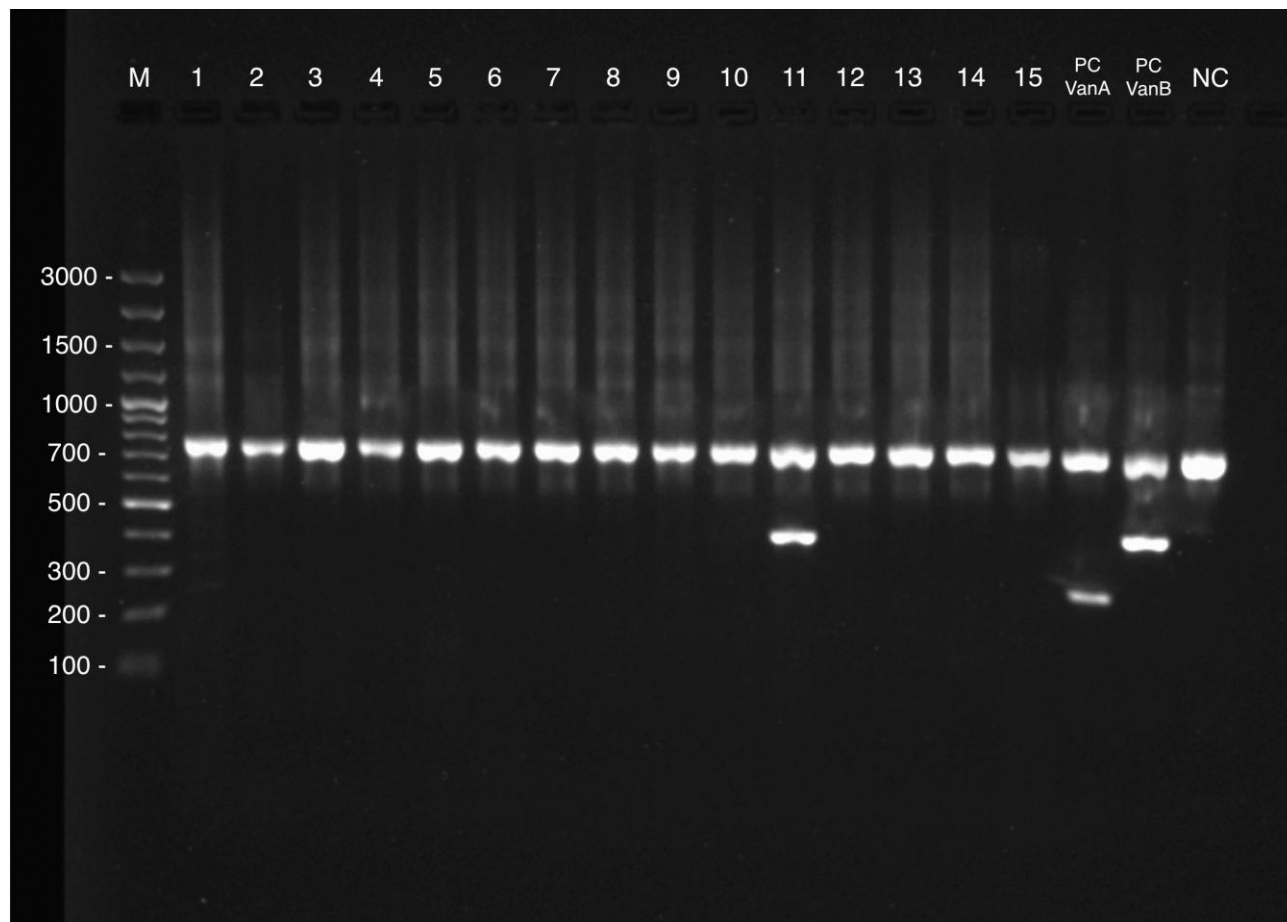


Figure S4. Agarose gel electrophoresis of PCR-amplified VanA and VanB genes in surface sediment samples.

Lanes: M – mol. weight marker; 1 – sample 20; 2 – sample 19; 3 – sample 18; 4 – sample 17; 5 – sample 16; 6 – sample 15; 7 – sample 13; 8 – sample 12; 9 – sample 11; 10 – sample 10; 11 – sample 9; 12 – sample 2; 13 – sample 1; 14 – sample 7; 15 – sample 8; PC VanA – VanA positive control (256 b.p.); PC VanB – VanB positive control (427 b.p.); NC – negative control.